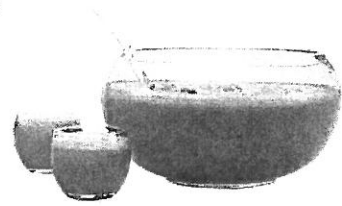
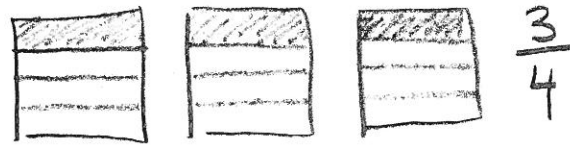
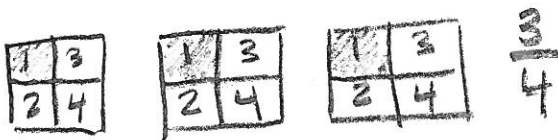




HAWAIIAN PUNCH



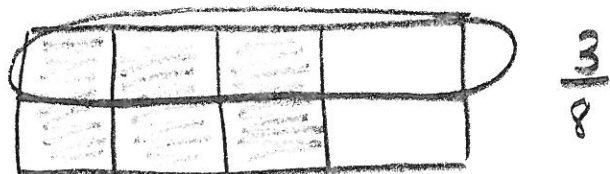
A	B
<p>Write a Division Sentence to solve each problem.</p> <ol style="list-style-type: none">8 gallons of Hawaiian Punch are poured equally into 4 punch bowls. How many gallons are in each bowl?1 gallon of Hawaiian Punch is poured equally into 4 punch bowls. How many gallons of punch are in each bowl?	<p>Write a Multiplication sentence to solve each problem.</p> <ol style="list-style-type: none">One fourth of an 8 gallon pail is poured out. How many gallons are poured out?One fourth of a 1 gallon pail is poured out. How many gallons are poured out?
<p>Write a division sentence and draw a model to solve.</p> <ol style="list-style-type: none">3 gallons of Hawaiian Punch are poured equally into 4 bowls. <u>How many gallons are in each bowl?</u>	<p>Write a multiplication sentence and draw a model to solve.</p> <ol style="list-style-type: none">One fourth of a 3 gallon pail is poured out. How many gallons are poured out?



Example 1

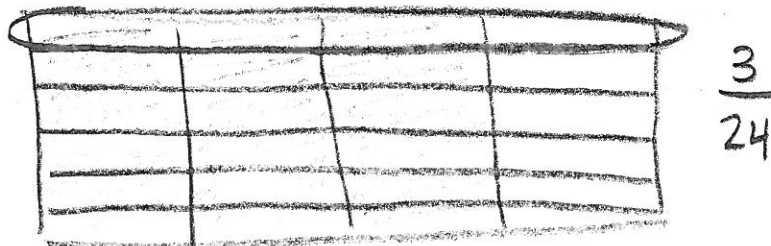
$\frac{3}{4}$ gallon of batter is poured equally into 2 bowls. How many gallons of batter are in each bowl?

$$\frac{3}{4} \div 2 = \frac{3}{4} \times \frac{1}{2} = \frac{3}{8}$$

**Example 2**

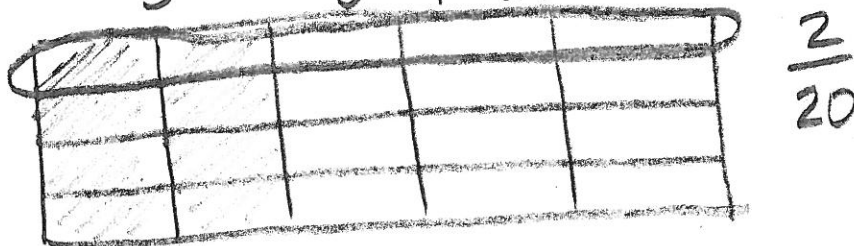
$\frac{3}{4}$ pan of lasagna is shared equally by 6 friends. What fraction of the pan will each friend get?

$$\frac{3}{4} \div 6 = \frac{3}{4} \times \frac{1}{6} = \frac{3}{24} = \frac{1}{8}$$

**Example 3**

A rope of length $\frac{2}{5}$ m is cut into 4 equal cords. What is the length of each cord?

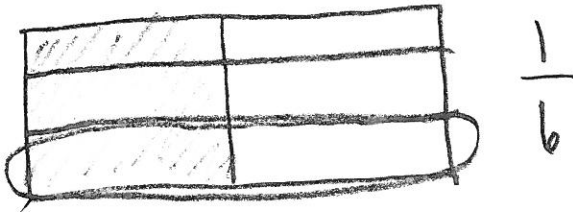
$$\frac{2}{5} \div 4 = \frac{2}{5} \times \frac{1}{4} = \frac{2}{20} = \frac{1}{10}$$



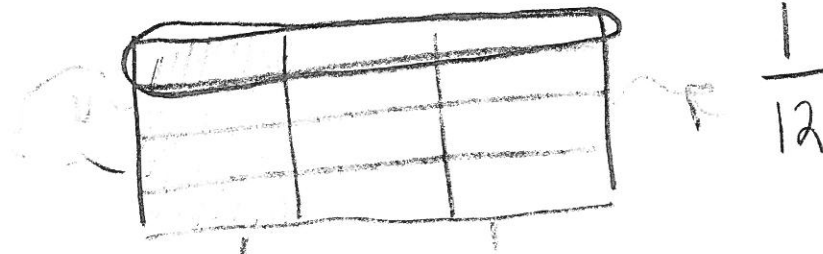
Exercises 1–6

Fill in the blanks to complete the equation. Then, find the quotient and draw a model to support your solution.

1. $\frac{1}{2} \div 3 =$ ~~_____~~ $\frac{1}{2} \times \frac{1}{3} = \frac{1}{6}$



2. $\frac{1}{3} \div 4 = \frac{1}{4} \times \frac{1}{3} = \frac{1}{12}$



Find the value of each of the following.

3. $\frac{1}{4} \div 5 = \frac{1}{4} \times \frac{1}{5} = \frac{1}{20}$

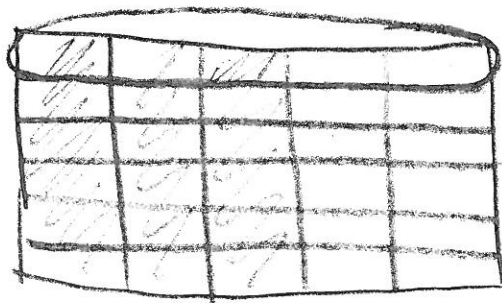
4. $\frac{3}{5} \div 5 = \frac{3}{5} \times \frac{1}{5} = \frac{3}{25}$

5. $\frac{1}{5} \div 4 = \frac{1}{5} \times \frac{1}{4} = \frac{1}{20}$

Solve. Draw a model to support your solution.

6. $\frac{3}{5}$ pt. of juice is poured equally into 6 glasses. How much juice is in each glass?

$$\frac{3}{5} \div 6 = \frac{3}{5} \times \frac{1}{6} = \frac{3}{30} = \frac{1}{10}$$



$$\frac{3}{30}$$